

El Gato Triste

C Instruments
MM = 144

James Kalbach, Hamburg, February 2001

Intro

Latin

Gm7

C9

Gm7

C9



Gm7

C9

Gm7

A^bM7(#11)



A 1

Gm9

E^bMaj7

A^bM7(#11)



A^m7(b5)

D7(b9)

Gm9

A^bM7(#11)

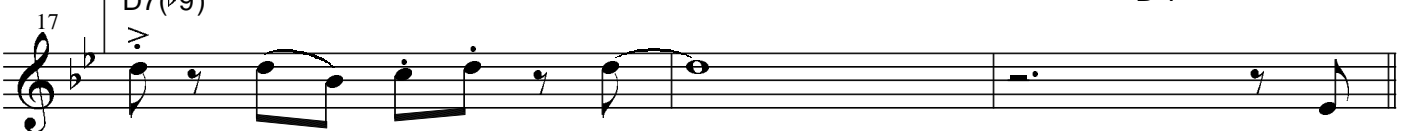


D7(b9)

Gm7

Fm7

B^b7



B

Swing

E^bm7

A^b7

A^b7(b9)

D^bMaj7

B^b13



Pedal on Ab

E^bm7

A^b7

A^m7(b5)

D7(b9)



A 2

Latin

Gm9

E♭Maj7

A♭M7(#11)

28

32

36

Coda

Gm7

C9

Gm7

C9

42

Solo - repeat as desired

Gm7

C9

Gm7

46

C9

Gm7

C9

49

Gm7

A♭M7(#11)

Gm7

52

Form: A A B A